

ORDINANCE NO. 181-07

AN ORDINANCE APPROVING AND ADOPTING THE CITY OF JACKSON, OHIO, SEWER OVERFLOW EMERGENCY RESPONSE PLAN; DIRECTING THE SUBMITTAL THEREOF TO THE DIRECTOR OF THE OEPA; AND DECLARING AN EMERGENCY.

WHEREAS, the City of Jackson, in response to a consent order authorized under Ordinance No. 93-07, passed July 11, 2007, and which consent order was effective September 17, 2007, from the State of Ohio Attorney General's Office, authorized the preparation of a Sewer System Emergency Response Plan (SSERP), a.k.a., Sewer Overflow Response Plan (SORP), as a part of the ongoing capacity, management and operation & maintenance (CMOM) of the City of Jackson sewer system; and

WHEREAS, the City of Jackson Council authorized the selection of CT Consultants, Inc., a firm qualified to perform professional engineering services to assist the City in responding to the consent order, under Ordinance No. 73-07; and

WHEREAS, CT Consultants, Inc. has subsequently prepared and presented a Sewer Overflow Response Plan (SORP) which addresses the elements required in Section IX – SEWER SYSTEM – OVEFLOW EMERGENCY RESPONSE PLAN, paragraph 25; and

WHEREAS, the City of Jackson, through its Director of Public Service/City Engineer has reviewed the SORP and recommends its approval and adoption for submittal to the Director, Ohio EPA, for his approval, as required in the previously cited paragraph 25 of the consent order, prior to the implementation of the SORP.

NOW, THEREFORE, BE IT ORDAINED BY THE COUNCIL OF THE CITY OF JACKSON, STATE OF OHIO, as follows:

Section One. The Council of the City of Jackson hereby approves and adopts the SORP, as recommended by the Director of Public Service/City Engineer, substantially in the form included in the attached Exhibit "A", "CITY OF JACKSON SEWER OVERFLOW RESPONSE PLAN, JANUARY, 2008", as if fully rewritten herein.

Section Two. The Director of Public Service/City Engineer, on behalf of the City of Jackson, is hereby authorized and directed to submit said SORP to the Director, Ohio EPA, for his approval, as required in paragraph 25 of the consent order, as outlined in said order.

Section Three. This Ordinance is hereby declared to be an emergency Ordinance necessary for the immediate preservation of the public peace, health, or safety of the City of Jackson, in that it is necessary to submit the SORP to the Director, Ohio EPA, as soon as possible to timely address the consent order. Therefore, this Ordinance shall go into effect upon passage and approval by the Mayor, as provided in Ohio Revised Code Section 731.30.

Section Four.

In the event this ordinance receives a majority vote for passage but fails to receive the required number of votes to pass as an emergency, then this Ordinance shall be deemed to have passed but with no emergency clause and shall take effect as the earliest time permitted by law.

Section Five.

It is hereby found and determined that all formal actions of this Council relating to the adoption of this Ordinance were adopted in an open meeting of this Council, and that the deliberations of this Council that resulted in such formal actions, were in a meeting open to the public, in compliance with all legal requirements, including Section 121.22 of the Ohio Revised Code.

Date:

1-28-08


PRESIDENT OF COUNCIL


CLERK OF COUNCIL

Approved:

Date:

1-28-08


MAYOR

EXHIBIT "A"

CITY OF JACKSON, OHIO

SEWER OVERFLOW RESPONSE PLAN

January 2008

07200



CT Consultants
engineers | architects | planners

35000 Kaiser Court | Willoughby | Ohio | 44094
440.951.9000 | www.ctconsultants.com

Approved on: _____
(Date)

Amended on: _____
(Date)

Sewer System Owner:

City of Jackson
145 Broadway Street
Jackson, Ohio 45640-16565

Contact Persons:

Randy Heath, Mayor
740-286-3224

William Sheward, Service-Safety Director
740-286-2201

Steve Riegel, Collection System Superintendent
740-286-3271

Greg Wilson, Director of Water & Wastewater
740-286-1137

Regulatory Agency to Report Sewer Overflow:

Ohio EPA
Abbot Stevenson
Southeast District Office
2195 Front Street
Logan, Ohio 43138-9031
Ph: 740-385-8501

Jackson County Health Department
200 E. Main Street
Jackson, Ohio 45650
Ph: 740-286-5094

SORP Prepared by:

CT Consultants, Inc.
35000 Kaiser Court
Willoughby, Ohio 44094
440-951-9000

Contact:
Thomas E. Voldrich, P.E.
440-951-9000, Ext. 222

TABLE OF CONTENTS

<u>SECTION</u>	<u>PAGE No.</u>
Title Page	
Contacts Page	
Table of Contents	i
Appendices List	ii
I. Authority	1
II. General	1
A Objectives	1
B Organization of Plan	2
III. Overflow Response Procedure	2
A Receipt of Information Regarding an SSO	2
B Dispatch of Sewer Maintenance to Site of Sewer Overflow	4
1 Dispatching Maintenance Personnel	4
2 Maintenance Personnel Instructions	4
3 Additional Resources	5
4 Preliminary Assessment of Damage to Private and Public Property	5
5 Field Supervision and Inspection	6
6 Coordination with Hazardous Material Response	5
C Overflow Correction, Containment, and Clean-up	6
1 Responsibilities of City Sewer Maintenance Personnel Upon Arrival	7
2 Initial Measures for Containment	8
3 Additional Measures Under Potentially Prolonged Overflow Conditions	8
4 Cleanup	8
D Sewage Overflow Report	9
E Customer Satisfaction	11
IV. Public Advisory Procedure	11
A Temporary Signage	11
B Other Public Notification	11
V. Regulatory Agency Notification Plan	12
A Immediate Notification	13
B Secondary Notification	13
VI. Maintenance of SORP	13

Table of Contents – Continued

Appendices

Appendix A – Sanitary Sewer Overflow Report Form

Appendix B – Sewer Overflow Notice Plan Flow Chart

Appendix C – Sewer Overflow Response Tracking Protocol

Appendix D – List of Public Offices to Report Overflow

Appendix E – Suggested Criteria for Demonstrating How a Sewer Overflow was Unavoidable

Appendix F – Measures to Avoid Sewer Overflow

Appendix G – Overflow Descriptions and Required Notifications

I. AUTHORITY

This Sewer Overflow Response Plan (SORP) is prepared pursuant to the Ohio EPA Consent Order effective September 17, 2007 to facilitate proper sewer overflow and water in basement incident reporting procedures.

II. GENERAL

The Sewer Overflow Response Plan (SORP) is designed to ensure that every report of a sewage overflow incident is immediately dispatched to the appropriate City of Jackson Sewer Department personnel for confirmation. Quick response will minimize the effects of the overflow with respect to impacts on public health, beneficial uses and water quality of surface waters and on customer service. The SORP further includes provisions to ensure safety pursuant to the directions provided by the Ohio Environmental Protection Agency (Ohio EPA) and that notification and reporting is made to the Ohio EPA and Jackson County Health Department when applicable. For purposes of this SORP, “confirmed sewage spill” is also sometimes referred to as “sewer overflow,” “overflow,” or “SSO”. The effective date of this plan is January 17, 2008.

A. Objectives

The primary objective of the SORP is to protect public health and the environment, satisfy regulatory agencies and waste discharge permit conditions which address procedures for managing sewer overflows, and minimize risk of enforcement actions against the City of Jackson, sewer system owner.

Additional objectives of the SORP are as follows:

- Protect collection system personnel and wastewater treatment plant;
- Protect the collection system, wastewater treatment facilities, and all appurtenances, and
- Protect private and public property beyond the collection and treatment facilities

B. Organization Of Plan

The key elements of the SORP are addressed individually as follows:

Section III - Overflow Response Procedure

Section IV - Public Advisory Procedure

Section V - Regulatory Agency Notification Procedure

Section VI – Maintenance of SORP

Section VII - Appendices

III. OVERFLOW RESPONSE PROCEDURE

The Overflow Response Procedure presents a strategy for the City of Jackson Water and Sewer Department to mobilize labor, materials, tools and equipment to correct or repair any condition, which may cause or contribute to an unpermitted discharge. The plan considers a wide range of potential system failures that could create an overflow to surface waters, land or buildings

A. Receipt of Information Regarding an SSO

An overflow may be detected by City employees or by others. The City of Jackson is responsible to act based on received phone calls or reports on possible sewage overflow from the wastewater disposal system, and to provide immediate response to investigate and/or correct reported sewer overflow.

Generally, telephone calls from the public reporting possible sewer overflows are received at the public offices identified in Appendix D.

1 The telephone operator obtains all relevant information available regarding the overflow including:

a. Time and date call was received;

- b. Specific location;
- c. Description of problem;
- d. Time possible overflow was noticed by the caller;
- e. Caller's name and phone number;
- f. Observations of the caller; and
- g. Other relevant information that will enable the City Collection System Superintendent, to quickly locate, assess and stop the overflow.

The telephone operator records initial information in the Sewage Overflow Report (Ref. Appendix A) and notifies City Water and Sewer Department.

2. The City Water and Sewer Department dispatches sewer maintenance personnel to confirm the overflow. Until verified, the report of a possible spill will not be referred to as a "sewer overflow".

The City Water and Sewer Department completes the Sewage Overflow Report (Ref. Appendix A) within 24 hours of the sewer overflow confirmation and provides the information orally to the Ohio EPA.

If the overflow will affect bathing areas during the bathing season, or public drinking water intakes, the Safety-Service Director shall notify the Ohio EPA contact person and the County Department of Health contact person orally, within two hours of becoming aware of the discharge.

If the overflow results in a fish kill, notify the Ohio EPA contact person within two hours of becoming aware of the discharge. The City Collection System Superintendent is responsible for reviewing, updating and signing the final Sewage Overflow Report. Sewage overflow response tracking protocol is summarized in Appendix C

B. Dispatch of Sewer Maintenance Personnel to Site of Sewer Overflow

Failure of any element within the wastewater disposal system that threatens to cause or causes a SSO must trigger an immediate response to isolate and correct the problem. Personnel and equipment must be available to respond to any SSO locations. Additional maintenance personnel shall be “on call” in the event extra manpower is needed. Summary of Sewer Overflow Action Plan is included in Appendix C.

1 Dispatching Maintenance Personnel

- When the City of Jackson receives notification of a potential sewer overflow outlined in Section A, the City of Jackson Collection System Superintendent dispatches maintenance personnel with appropriate resources as required.

2 Maintenance Personnel Instructions

- Dispatch maintenance personnel by telephone or radio. Assign and appropriate personnel, materials, supplies and equipment needed.
- The telephone operator must verify that the entire message has been received and acknowledged by the maintenance personnel who were dispatched. All personnel being dispatched to the site of an SSO proceed immediately to the site of the overflow. Report any delays or conflicts in assignments immediately for resolution.
- In all cases response maintenance personnel report their findings, including possible damage to private and public property, to the City Collection System Superintendent immediately upon making their investigation. If the Collection System Superintendent has not received findings from the field crew within a reasonable period of time, the Collection System Superintendent contacts the response maintenance personnel to determine the status of the investigation.

3. Additional Resources

The City Collection System Superintendent receives and conveys to appropriate parties requests for additional personnel, material, supplies, and equipment for maintenance personnel working at the site of a sewer overflow

4. Preliminary Assessment of Damage to Private and Public Property

The City maintenance personnel shall use discretion in their actions as reasonably as they can. They must be aware that the City of Jackson could face increased liability for any further damages inflicted to private property during such assistance. The City maintenance personnel shall not enter private property for purposes of assessing damage unless authorized by the City Collection System Superintendent. The City maintenance personnel shall take appropriate still photographs and/or video footage; if possible, of the sewer overflow impacted area in order to thoroughly document the nature and extent of impacts. Retain photographs for filing with the Overflow Report.

5. Field Supervision and Inspection

- The City Collection System Superintendent visits the site of the sewer overflow to ensure that provisions of this Overflow Response Plan and other directives are met
- The City Service-Safety Director is responsible for verbally notifying Ohio EPA and County Department of Health within the specified time and submitting the Overflow Report to Ohio EPA.

6. Coordination with Hazardous Material Response

- Upon arrival at the scene of a sewer overflow, should a suspicious substance (e.g., oil sheen, foamy residue) be found on the ground surface, or should a suspicious odor (e.g., gasoline) not common to the sewer system be detected,

the City sewer maintenance crew shall immediately contact the City Collection System Superintendent for guidance before taking further action.

- Should the City Collection System Superintendent determine the need to alert the hazardous material response team, the maintenance personnel awaits the contracted hazardous waste team response
- Contact the Ohio EPA 24-hour Spill Hotline at 1-800-457-7362
- Upon arrival of the hazardous material response team, the City sewer maintenance personnel takes direction from the person with the lead authority of that team. Only when that authority determines it is safe and appropriate for the City sewer maintenance personnel to proceed under the SORP with the containment, clean-up activities and correction.

C. Overflow Correction, Containment, and Clean-Up

This section describes specific actions to be performed by the City sewer maintenance personnel during a SSO.

The objectives of these actions are:

- To protect public health, environment and property from sewage overflows and restore surrounding area back to normal as soon as possible;
- To establish perimeters and control zones with appropriate traffic cones and barricades, vehicles or use of natural topography (e.g., hills, berms);
- To promptly notify the regulatory agency with preliminary overflow information and potential impacts;
- To contain the sewer overflow to the maximum extent possible including preventing the discharge of sewage into surface waters; and
- To minimize the City of Jackson's exposure to any regulatory agency penalties and fines. Under most circumstances, the City of Jackson can handle all response actions with its own maintenance forces. They have the skills and experience to respond rapidly and in the most appropriate manner. An important issue with respect to an emergency response is to ensure that the

temporary actions necessary to divert flows and repair the problem do not produce a problem elsewhere in the system.

Circumstances may arise when the City of Jackson could benefit from the support of private-sector construction assistance. This may be true in the case of large diameter pipes buried to depths requiring sheet piling and dewatering should excavation be required. The City of Jackson may also choose to use private contractors for open excavation operations that might exceed one day to complete.

1. Responsibilities of City Sewer Maintenance Personnel Upon Arrival

It is the responsibility of the first personnel who arrive at the site of a sewer overflow to protect the health and safety of the public by mitigating the impact of the overflow to the maximum extent possible. Should the overflow not be the responsibility of the City of Jackson but there is imminent danger to public health, public or private property, or to the quality of waters of the state, then the City Collection System Superintendent takes prudent emergency action until the responsible party assumes responsibility and provides actions.

Upon arrival at a SSO, the City sewer maintenance personnel performs the following:

- Determines the cause of the overflow, e.g. sewer line blockage, pump station mechanical or electrical failure, sewer line break, etc.;
- Identifies and requests assistance or additional resources to correct the overflow or to assist in determination of its cause;
- Takes immediate steps to stop the overflow, e.g. relieves pipeline blockage, manually operates pump station controls, repairs pipe, etc. Extraordinary steps may be considered where overflows from private property threaten public health and safety (e.g., an overflow running off of private property into the public right-of-way); and

- Requests additional personnel, materials, supplies, or equipment that will expedite and minimize the impact of the overflow.

2 Initial Measures for Containment

Initiate measures to contain the overflowing sewage and recover where possible sewage, which has already been discharged, minimizing impact to public health or the environment.

- Determine the immediate destination of the overflow, e.g. storm drain, street curb gutter, body of water, stream bed, etc ;
- Identify and request the necessary materials and equipment to contain or isolate the overflow, if not readily available; and
- Take immediate steps to contain the overflow, e.g., block or bag storm drains, recover through vacuum truck, divert into downstream manhole, etc.

3 Additional Measures Under Potentially Prolonged Overflow Conditions

In the event of a prolonged sewer line blockage or a sewer line collapse, set up a portable by-pass pumping operation around the obstruction

- Take appropriate measures to determine the proper size and number of pumps required to effectively handle the sewage flow.
- Implement continuous or periodic monitoring of the by-pass pumping operation as required.
- Address regulatory agency issues in conjunction with emergency repairs.

4 Cleanup

Clean sewer overflow sites thoroughly after an overflow. No readily identified residue (e.g., sewage solids, papers, rags, plastics, and rubber products) is to remain.



- Whenever possible, digital photos should be taken of the area before and after cleanup.
- Where practical, thoroughly flush the area and clean of any sewage or wash-down water. Solids and debris are to be flushed, swept, raked, picked-up, and transported for proper disposal.
- Secure the overflow area to prevent contact by members of the public until the site has been thoroughly cleaned.
- Where appropriate, disinfect and deodorize the overflow site.
- Where sewage has resulted in ponding, pump the pond dry and dispose of the residue in accordance with applicable regulations and policies.
- If a ponded area contains sewage, which cannot be pumped dry, it may be treated with bleach. If sewage has discharged into a body of water that may contain fish or other aquatic life, do not use bleach. Contact the Ohio EPA for specific instructions.

D. Sewage Overflow Report

The Sewer Overflow Report in Appendix A contains information which is required to be reported to OHIO EPA and possibly to the County Department of Health depending upon the nature of the spill.

If the overflow will affect bathing areas during the bathing season, or public drinking water intakes, the City shall notify the Ohio EPA contact person and the County Department of Health contact person orally, within two hours of becoming aware of the discharge.

If the overflow results in a fish kill, notify the Ohio EPA contact person within two hours of becoming aware of the discharge.

The City Collection System Superintendent completes a Sewer Overflow Report (Ref. Appendix A). The City Collection System Superintendent promptly notifies the City

Office and Ohio EPA when the overflow is eliminated. Information regarding the sewer overflow includes the following:

- Determination if the sewage overflow had reached surface waters, i.e., all overflows where sewage was observed running to surface waters, or there was obvious indication (e.g. sewage residue) that sewage flowed to surface waters; and
- Determination that the sewage overflow had not reached surface waters by describing conditions at the sewage overflow, which support this determination.
- Determination of the start time of the sewer overflow by one of the following methods:
 - a Date and time information received and/or reported to have begun and later substantiated by City sewer maintenance personnel;
 - b Visual observation;
- Determination of the stop time of the sewer overflow by one of the following methods:
 - a When the blockage is cleared or flow is controlled or contained; or
 - b The arrival time of the City sewer maintenance personnel, if the overflow stopped between the time it was reported and the time of arrival.
- Visual observations
An estimation of the rate of sewer overflow in gallons per minute (GPM) by one of the following criteria:
 - a Direct observations of the overflow; or
 - b Measurement of actual overflow rate from the sewer main
- Determination of the volume of the sewer overflow
- Photographs of the event, when possible.
- Assessment of any damage to the exterior areas of public/private property.
City sewer maintenance personnel shall not enter private property for purposes of estimating damage to structures, floor and wall coverings, and other personal property without authorization from the City Collection System Superintendent

E. Customer Satisfaction

The City Collection System Superintendent follows up in person or by telephone with the entity who was reporting the overflow. The cause of the overflow and its resolution will be disclosed.

IV. PUBLIC ADVISORY PROCEDURE

This section describes the actions the City of Jackson will take, in cooperation with the Ohio EPA and/or County Department of Health, to limit public access to areas potentially impacted by unpermitted discharges of pollutants to surface water bodies from the wastewater collection system.

A. Temporary Signage

The City of Jackson has primary responsibility for determining when to post notices of polluted surface water bodies or ground surfaces that result from uncontrolled wastewater discharges from its facilities. The postings do not necessarily prohibit use of recreational areas, unless posted otherwise, but provide a warning of potential public health risks due to sewage contamination.

The City Collection System Superintendent and City Service-Safety Director determine if posting of a confirmed overflow is necessary.

B. Other Public Notification

Should the posting of surface water bodies or ground surfaces subjected to a sewer overflow be deemed necessary by the City Collection System Superintendent, the City Service-Safety Director determines the need for further public notification.

If deemed necessary, the public will be notified via a legal notice in the local newspaper. The notice will read:

"A Sanitary Sewer Overflow (SSO) has occurred in the vicinity of _____. City crews have responded and are cleaning the area. The best way to protect yourself from the possible negative health effects of exposure to untreated sewage is to avoid contact with the affect area until the City has finished cleaning the area.

If you see a SSO, or if you have any questions, please contact:

City of Columbus

Division of Sewerage and Drainage

Sewer Maintenance Operations Center

(614) 645-7102

Or visit

www.utilities.ci.columbus.oh.us/sewers_drains "

V. REGULATORY AGENCY NOTIFICATION PLAN

The Regulatory Agency Notification Plan establishes procedures, which the City of Jackson follows to provide formal notice to the Ohio EPA as necessary in the event of a SSO.

Agency notifications will be performed in parallel with other internal notifications. Internal notification and mobilization of City sewer maintenance personnel are established in Section III - Overflow Response Procedure.

Using data supplied during the verification process and updates from the maintenance personnel, the City Collection System Superintendent prepares initial and final Overflow Reports. Initial report will be provided orally to the Ohio EPA and if necessary the local health department within either two (2) hours or 24 hours from the time the City became aware of the SSO. If the

overflow will affect bathing areas during the bathing season, or public drinking water intakes, the City shall notify the Ohio EPA contact person and the County Department of Health contact person orally, within two hours of becoming aware of the discharge. If the overflow results in a fish kill, notify the Ohio EPA contact person within two hours of becoming aware of the discharge.

Prepare and provide final report to the regulatory agency within five (5) days after the City becomes aware of the overflow. Submit by mail. The City Collection System Superintendent is responsible for meeting the notification requirement. The City Collection System Superintendent prepares written notification to the appropriate regulatory agency of any confirmed overflows. The City Collection System Superintendent signs these notifications. The Ohio EPA contact person may waive the written report requirement on a case-by-case basis if the oral report was received within the required time frame. Regardless of other notifications, a Report of Noncompliance form is required to be submitted with the monthly Discharge Monitoring Report.

A. Immediate Notification

If the overflow will affect bathing areas during the bathing season, or public drinking water intakes, the City shall notify the Ohio EPA contact person and the County Department of Health contact person orally, within two hours of becoming aware of the discharge.

If the overflow results in a fish kill, notify the Ohio EPA contact person within two hours of becoming aware of the discharge.

Fax the initial and any updated Sewer Overflow Report to:

- Ohio EPA, Southeast District Office
2195 Front Street
Logan, Ohio 43138-9031
Phone: (740) 385-8501
Fax: (740) 385-6490

B. Secondary Notification

City Collection System Superintendent may contact other agencies, as necessary, as well as other interested and possibly impacted parties.

VI. MAINTENANCE OF SORP

The SORP will be reviewed on an annual basis. Possible amendments can include:

- Change in procedures
- Change in contact personnel
- Changes due to regulatory requirements

A P P E N D I X A

Sanitary Sewer Overflow Report Form

SANITARY SEWER OVERFLOW REPORT FORM

1. General Information

- a. SPDES # OH: _____
b. Name of collection system: _____
c. Authorized representative filing this form:

Name: _____
Title: _____
e-mail Address: _____

- d. Type of filing report:

_____ Initial
_____ Final

- e. Date of filing report:

_____ Initial
_____ Final

2. Oral Reporting of Overflow, Bypass or Upset

All releases of untreated or partially treated sewage required 24-hour oral notification except those that require 2-hour oral notification

- a. Overflow requiring 2-hour notification.

_____ Impact or closure of bathing area
_____ Impact of closure of public drinking water intake
_____ Results in fish kills
_____ Other: _____

- b. Overflow requiring 24-hour notification.

_____ Gravity sewer manhole
_____ Pump station
_____ Treatment plant bypass
_____ Other

- c. Oral report to EPA contact person.

Name: _____
Phone Number: _____
e-mail Address: _____
EPA Office: _____
Date of Phone Notification: ____/____/____



- d. Oral report to local Health Department contact person

Name: _____

Phone Number: _____

e-mail Address: _____

EPA Office: _____

Date of Phone Notification: ____/____/____

3 Overflow Location and Description

- a Location

City/Town/Village: _____

Address or Landmark: _____

- b. Discharge Location:

____ Directly to receiving ground water

____ Ground

____ Receiving water via storm drain

____ Building

- c. Type of overflow

____ Gravity sewer manhole

____ Pump station

____ Bypass at treatment plant

____ Other

4. Time of Overflow/Bypass Incident

- When did the incident begin? Date: ____/____/____

- Was the overflow/bypass event ongoing at the time of report: ____ Yes ____ No

If yes, how long is the incident expected to continue? _____

If no, when did event end? Date: ____/____/____ Time: _____

5 General Information about Overflow at this Location

- a. Estimated volume of overflow released at time of report: _____

b. Method of estimating volume: _____

c. Estimated total volume of overflow released at end of incident: _____

d. Were digital photos taken? ____ Yes ____ No

e. Corrective measures taken:

____ No action

____ Removed blockage

____ Repair pump station

____ Other: _____



f. Cause of overflow/bypass (select all those that apply):

☐ Rain

☐ Snow melt

☐ High ground water

☐ Other excessive flow

☐ Sewer system blockage or collapse

☐ Pump/lift station failure

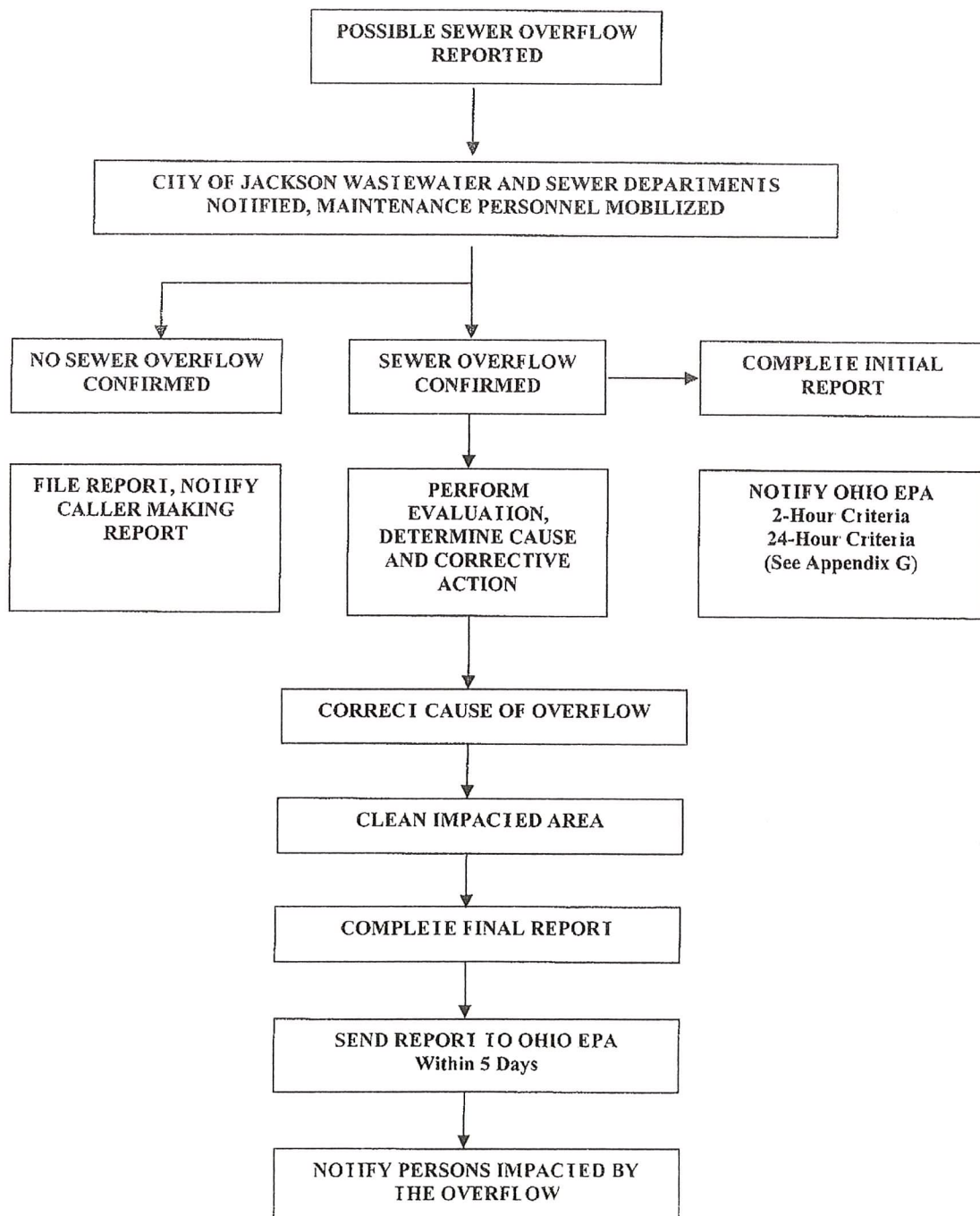
☐ Other: _____

Service-Safety Director

A P P E N D I X B

SEWER OVERFLOW NOTICE PLAN FLOW CHART

SANITARY SEWER OVERFLOW NOTICE PLAN FLOW CHART

CITY OF JACKSON
WASTEWATER DISPOSAL SYSTEM

A P P E N D I X C

SEWER OVERFLOW RESPONSE TRACKING PROTOCOL

**SANITARY SEWER OVERFLOW (SSO)
RESPONSE TRACKING PROTOCOL
CITY OF JACKSON
WASTEWATER DISPOSAL SYSTEM**

<u>Step</u>	<u>Event</u>
1.	Report of possible SSO received by a Telephone Operator
2.	Telephone Operator enters received information into Sewer Overflow Report.
3.	Telephone Operator contacts City Collection System Superintendent, which then deploys maintenance personnel to confirm reported SSO.
4.	Maintenance personnel reports back to the City Collection System Superintendent, reporting significance of the overflow.
5.	City Collection System Superintendent completes initial Overflow Report. If the overflow will affect bathing areas during the bathing season, or public drinking water intakes, the City shall notify the EPA contact person and the Jackson County Health Department contact person orally, within two hours of becoming aware of the discharge. If the overflow results in a fish kill, notify the EPA contact person within two hours of becoming aware of the discharge.
6.	Within five days, the City of Jackson Collection System Superintendent prepares final Overflow Report. Report is mailed to EPA.
7.	Data from Overflow Report is entered into a permanent record on file at the City Water and Sewer Department
8.	Attach Report of Noncompliance to Discharge Monitoring Report.

A P P E N D I X D

LIST OF PUBLIC OFFICES TO REPORT OVERFLOW

LIST OF PUBLIC OFFICES TO REPORT OVERFLOW**CITY OF JACKSON
WASTEWATER DISPOSAL SYSTEM**

<u>Contact Name</u>	<u>Telephone</u>
City of Jackson Office Randy Heath, Mayor	(740) 286-3224
Steve Riegel, Collection System Superintendent	(740) 286-3271
William Sheward Service-Safety Director	(740) 286-2201
Greg Wilson, Director of Water and Wastewater	(740)286-1137
Abbot Stevenson Ohio EPA Southeast District Office	(740) 385-8501
Jackson County Health Department	(740) 286-5094

A P P E N D I X E

SUGGESTED CRITERIA FOR DEMONSTRATING HOW A SEWER OVERFLOW WAS UNAVOIDABLE

**SUGGESTED CRITERIA FOR DEMONSTRATING HOW A
SEWER OVERFLOW WAS UNAVOIDABLE**

**CITY OF JACKSON
WASTEWATER DISPOSAL SYSTEM**

SSOs can be demonstrated as unavoidable by showing the discharge meets each of the criteria 1 through 5

1. The discharge resulted from a temporary, exceptional incident that was either:
 - A. Necessary to prevent loss of life, personal injury, or severe property damage, or
 - B. Beyond the reasonable control of the operator. Incidents beyond the reasonable control of the operator would include:
 - Exceptional acts of nature,
 - Third party actions that could not be reasonably prevent, including vandalism that could not be avoided by reasonable measures,
 - Blockages that could not be avoided by reasonable measures,
 - Unforeseeable sudden structural, mechanical, or electrical failure that could not be avoided by reasonable measures.
2. The discharge had no feasible alternative.
3. The discharge was not caused by any of the following:
 - A. Operational error,
 - B. Improperly designed or constructed collection system facilities,
 - C. Inadequate collection system facilities or components,
 - D. The lack of appropriate preventive maintenance, or
 - E. Careless or improper oversight.
4. Steps to stop the discharge, address the source of the problem, and mitigate potential impacts from the discharge were taken as soon as possible after becoming aware of the release.

A P P E N D I X F

MEASURES TO AVOID SEWER OVERFLOW

MEASURES TO AVOID SEWER OVERFLOW

CITY OF JACKSON WASTEWATER DISPOSAL SYSTEM

A. Proper Collection System Maintenance and Operations Program

- Cleaning of pipes (grease, roots deposits)
- Sealing or maintenance for deteriorating sewers
- Remediation of poor/substandard construction (short term)
- Sewer replacement or rehabilitation program (long term)
- Proper maintenance and operations of pump stations
- Inspection of private laterals

B. New Wastewater Disposal System Construction

- Use latest technology and standards in construction new wastewater disposal system improvements
- Perform property construction inspection/quality assurance procedures

APPENDIX G

OVERFLOW DESCRIPTIONS AND REQUIRED NOTIFICATIONS

OVERFLOW DESCRIPTIONS AND REQUIRED NOTIFICATION

CITY OF JACKSON WASTEWATER DISPOSAL SYSTEM

Overflows requiring 2-Hour Verbal Notification

- Impact or closure of bathing area during bathing season (Ohio EPA & Jackson County Health Department)
- Impact of closure of public drinking water intake (Ohio EPA and Jackson County Health Department)
- Results in a fish kill (Ohio EPA)

Overflows Requiring 24-Hour Notification (Ohio EPA only)

- Gravity sewer manhole
- Pump station
- Sewer siphon
- Treatment plant bypass

Abbot Stevenson
Ohio EPA
Southeast District Office
2195 Front Street
Logan, Ohio 43138-9031
Ph: 740-385-8501
Fx: 740-385-6490
Email: abbot.stevenson@epa.state.oh.us

Jackson County Health Department
200 E. Main Street
Jackson, Ohio 45640
Ph: 740-286-5094
Fx: 740-286-8809
Email: health@jchd.us